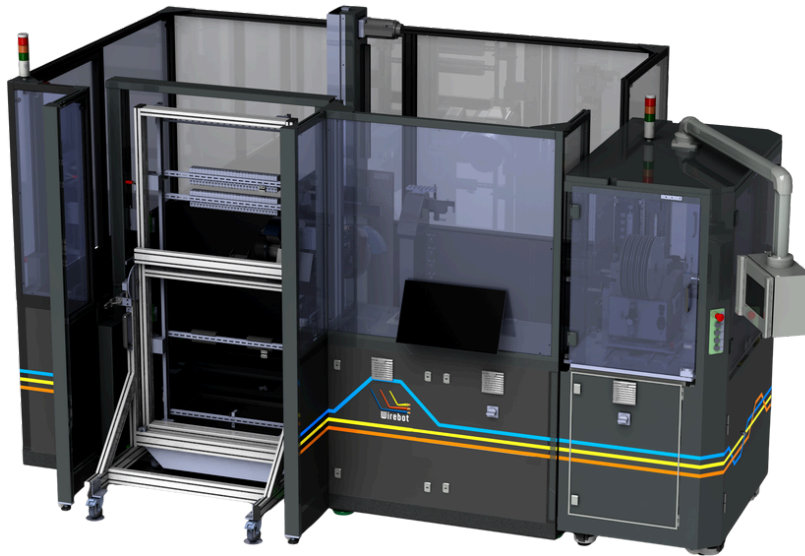




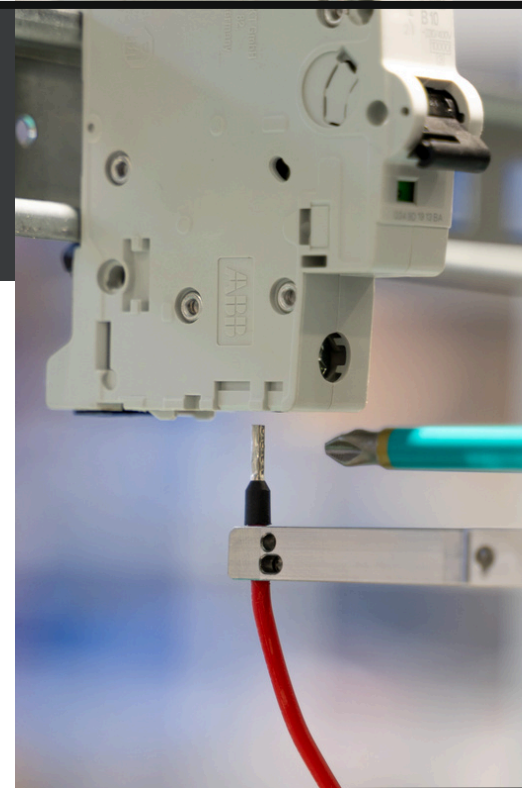
SHARP G1

MODULAR WIRING STATION FOR
CABINET BUILDERS



**FULLY AUTOMATED, VERTICAL,
HIGH-SPEED PLATFORM FOR
ELECTRICAL PANEL WIRING**

- INCREASED PRODUCTIVITY
- QUICK SETUP TIME
- REAL TIME DIAGNOSTICS AND REPORTING
- IMPROVED CONSISTENCY AND QA
- DATA COLLECTION & TRACABILITY
- INTERFACE TO PLANNING SOFTWARE
- REAL TIME COMPONENT VALIDATION
- SUPPORT STANDARD ROLLS AND FERRULES



**ENHANCE YOUR CABINET WIRING
EFFICIENCY BY OVER 60%**



SHARP G1

SPECIFICATIONS

Physical dimensions (length x width x high)

Foot print	4.0m x 2.7 m x 2.5 m
------------	----------------------

Panel wiring dimensions

Max. panel dimensions	Up-to 1,800 mm x 750mm x 230 mm
Max. components height	150 mm
Panel orientation	Upright on holding frame

Typical wires & ferrules

Number of wire types	Up-to 16 rolls (standard wire rolls supported)
Wire gauges	0.5-2.5 mm ² \ #20-#14 AWG
Ferrules-Crimping length	10mm / 8mm (Manual setup)

Connection point

Connection point types	Snap in, push-in and screw type
No. of screws bits	Up to 7
No. of twizers tools	Up to 12

Cycle time

Typical wiring cycle time	~ 35 sec /wire
---------------------------	----------------

Diagnostics

Wire gauge validation	Using sensor
Components position	By vision
Wires pull tests	Real time, as part of wiring sequence

Software

Machine control	Intuitive HMI, motion, I/O , sensors and remote maintenance
Components data base	Linked to validated cloud database
SmartFab	Get data from planning software, generate optimized routes and sequence, re-edit panel data before operation.
Vision	Initial scan, components position validation and guidance